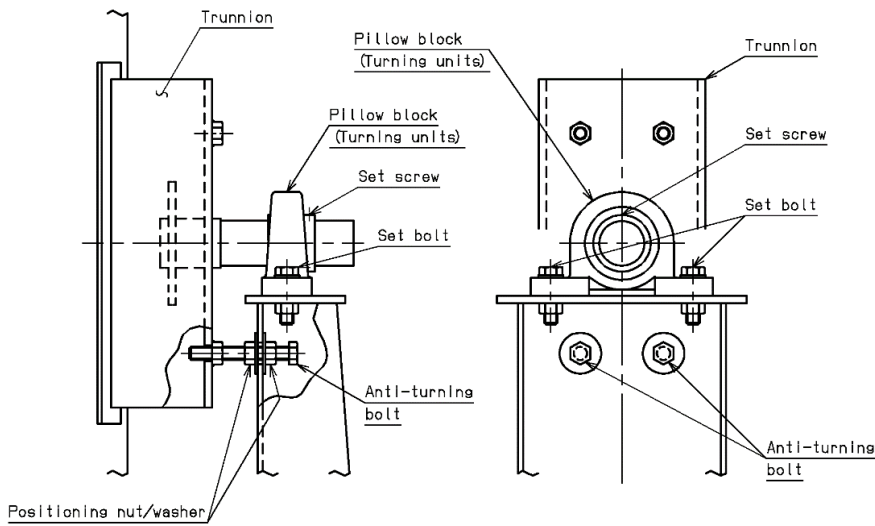




Spiral type heat exchanger

Installation procedure about the turning units

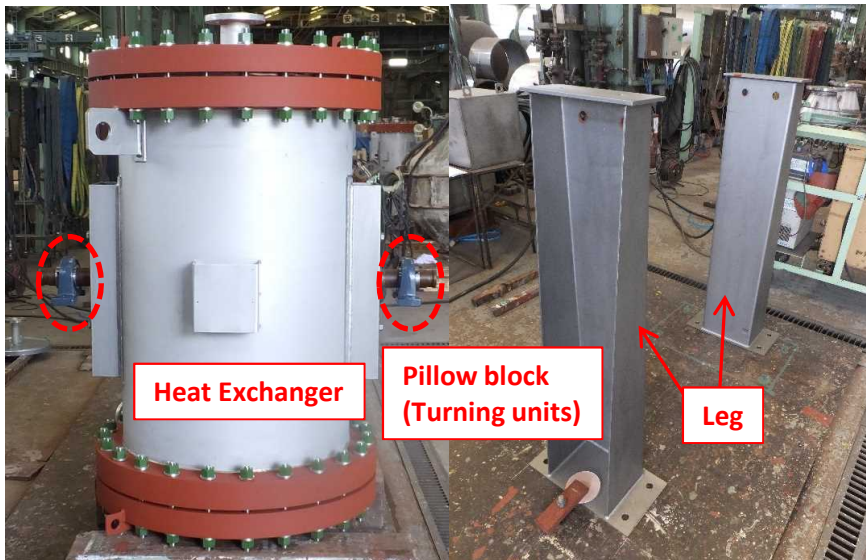


Name List

- Pillow block (Turning Units)
- Leg

For others
the name on the left image

Photo List

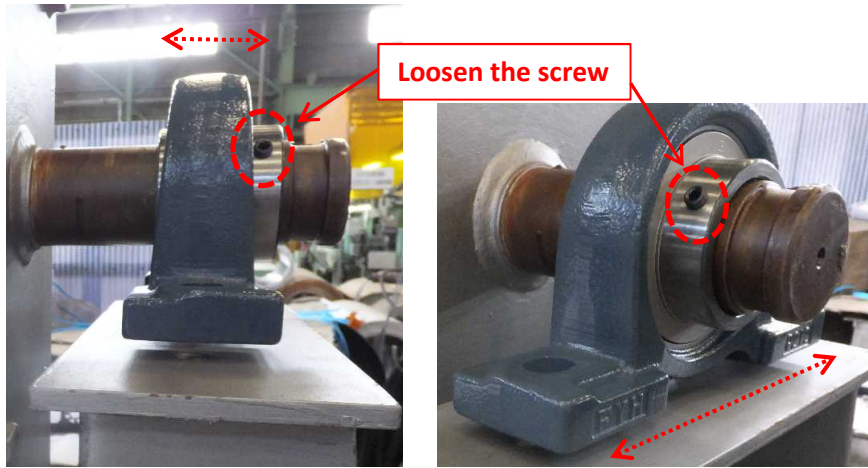


Step-1

Install the leg

Until Step-5, the heat exchanger body need to be lifted by a crane during install process.

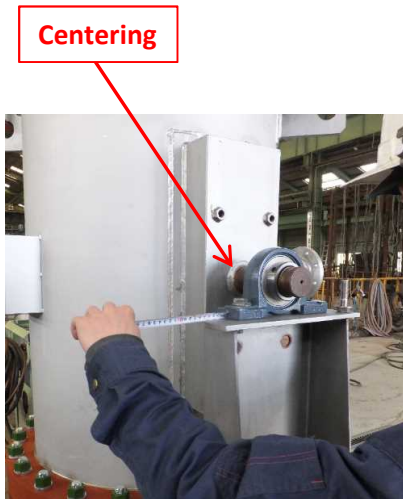
Step-2



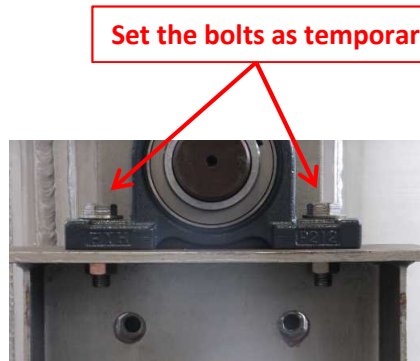
Loosen the screw

Ajust the Pillow block

Loosen the screw.
Adjust the position of
the pillow block to
the left and right.



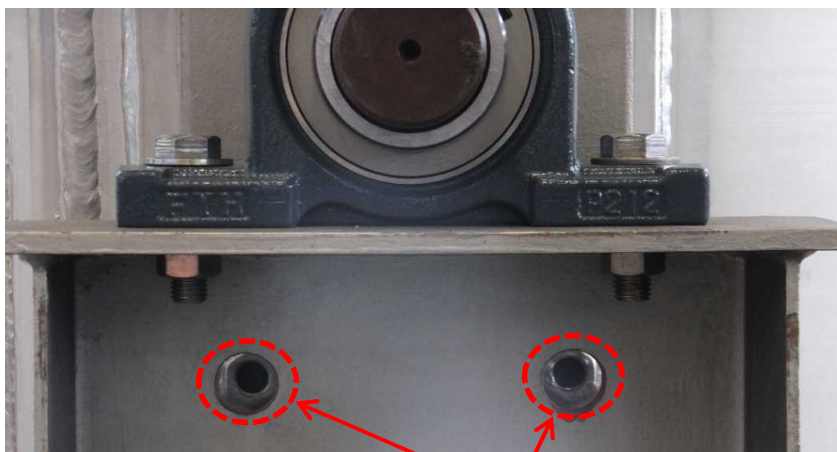
Centering



Set the bolts as temporary

Pillow block position is
in the center of the Leg.

And set the bolts
as temporary.



Make sure that can see the nut attached to the trunnion from the leg hole.

[POINTS]



On the heat exchanger



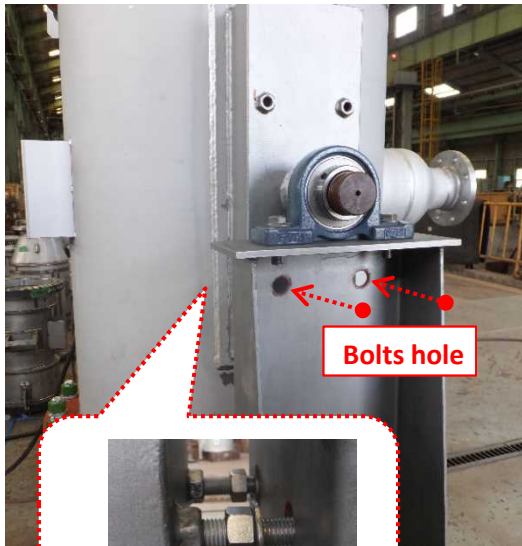
On the leg



Level the heat exchanger with using jack

Adjust the level with using jack

Check the level on the heat exchanger and leg.



Bolts hole

Anti turning bolts



Positioning nut and washer-1

Positioning nut and washer-2

Step-3

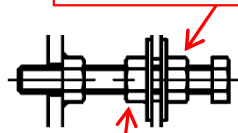
Set the "anti turning bolts" together with "positioning nut and washer-1, 2".

Anti turning bolts screw into the nuts on the trunnion.



Positioning nut and washer-2

Positioning nut and washer-1



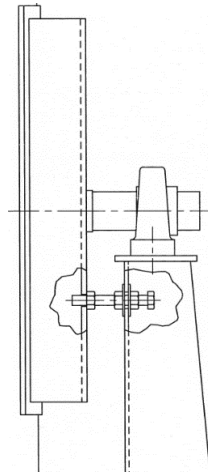
Positioning nut and washer-2



Positioning nut and washer-1

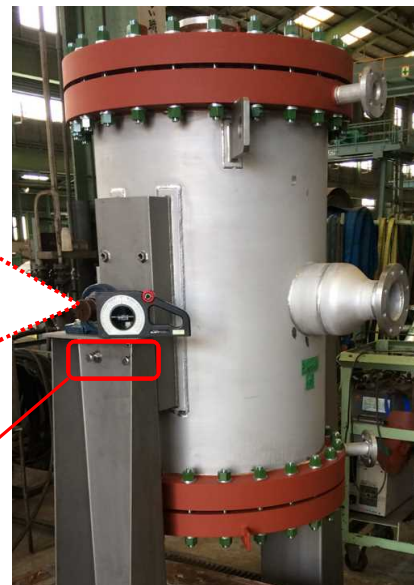
Please make sure that it is in the state shown in the photo.

* The other side is same.



Step-4

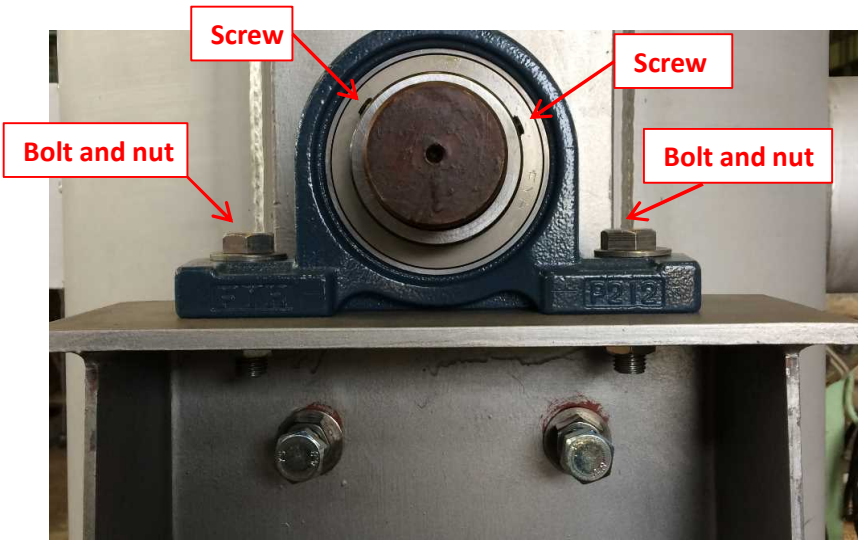
Please make sure that it is in the state shown in the photo.



Step-5

After confirming the tightened state of the anti-turning bolt, release the lifting state with the crane.

After that just in case, confirm the level.

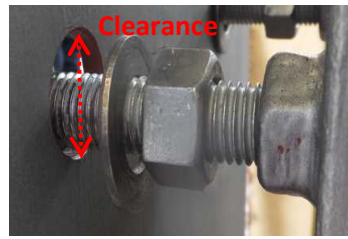


Step-6

Tight the all screw and bolt, nut.



Moves by clearance



Reference

After removing the lifting of the crane and before installing the piping, the heat exchanger body may tilt slightly and move a little as shown in the photo due to the balance of the nozzles.

The reason is a clearance between the leg hole and the anti-turning bolt, so there is no problem.

If it is tilted, push up the lower cover with a jack when assembling the pipe, check the levelness again, and then assemble the pipe.

KUROSE CHEMICAL EQUIPMENT CO., LTD.

Head Office Factory

2-5, 2-chome, Takasago, Takaishi-city Osaka 592-0001 JAPAN
TEL: +81-72-268-1371 FAX: +81-72-268-1367

Osaka Office

19-12, 1-chome. Edobori. Nishi-ku. Osaka 550-0002 JAPAN
TEL: +81-6-6444-0881 FAX: +81-6-6444-0885

Tokyo Office

27-8, 1-chome, Shinkawa, Chuo-ku, Tokyo 104-0033 JAPAN
TEL: +81-3-3553-3711 FAX: +81-3-3553-3715

* If you have question, please let us know the serial no.(Work no.)
on our product name plate.